

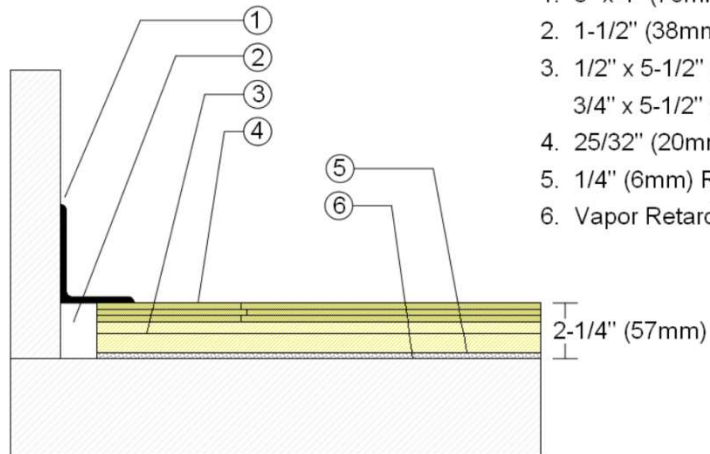


INFINITY
Wood Floors



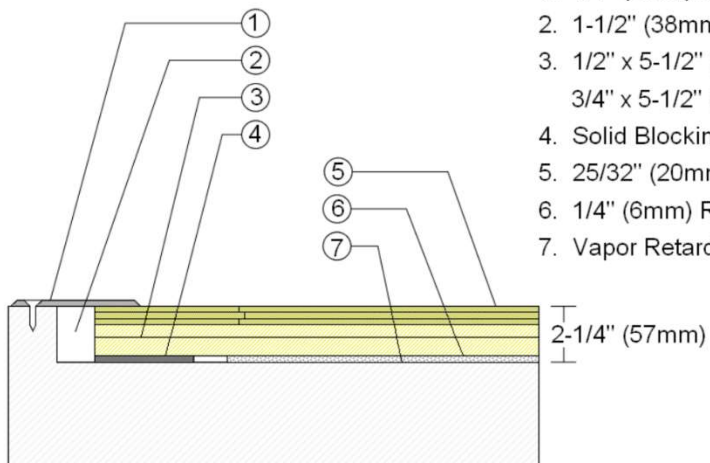
AACER
SPORTS FLOORING

WALLBASE



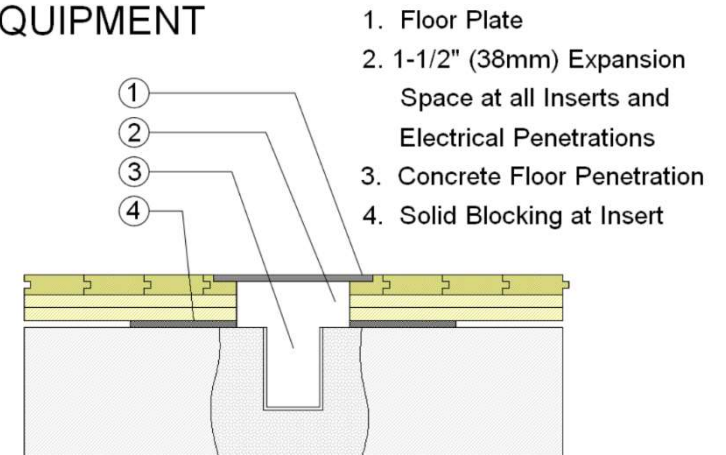
1. 3" x 4" (76mm x 101mm) Vent Cove Base
2. 1-1/2" (38mm) min. Expansion Space
3. 1/2" x 5-1/2" (12mm x 140mm) Upper Pine
3/4" x 5-1/2" (19mm x 140mm) Lower Pine
4. 25/32" (20mm) MFMA Maple Flooring
5. 1/4" (6mm) Resilient Foam Blanket
6. Vapor Retarder

THRESHOLD



1. 1/4" (6mm) Aluminum Threshold
2. 1-1/2" (38mm) min. Expansion Space
3. 1/2" x 5-1/2" (12mm x 140mm) Upper Pine
3/4" x 5-1/2" (19mm x 140mm) Lower Pine
4. Solid Blocking at Doorway
5. 25/32" (20mm) MFMA Maple Flooring
6. 1/4" (6mm) Resilient Foam Blanket
7. Vapor Retarder

EQUIPMENT



1. Floor Plate
2. 1-1/2" (38mm) Expansion Space at all Inserts and Electrical Penetrations
3. Concrete Floor Penetration
4. Solid Blocking at Insert

Description: SCISSORLOC LP

Resilience: 1/4" (6mm) Closed Cell Foam Blanket

Drawn By: RR

Date: 1/1/23

Revisions

ID	Description	By	Date